

FLOOR-TRUSS

ENGINEERED FLOOR SYSTEM



MiTek Canada Inc.'s FLOOR-TRUSS System offers the ultimate in design flexibility!

With longer clear spans than conventional lumber, architects and engineers can now enjoy clear span flexibility and building design freedom. Its open web design eliminates the need for cutting and drilling; so plumbing, electrical and ventilation services are installed quickly, saving time and money. MiTek floor trusses also permit the installation of strongback bridging which reduces vibration.

FEATURES

- Available in a variety of depths to match conventional or engineered lumber products.
- Manufactured to precise engineering specifications, for a strong, rigid truss system.
- Delivers reliable performance.

The MiTek Wood FLOOR-TRUSS System is easy to handle and install. Plus, its wide nailing surface speeds up installation of floor sheathing. The top chord bearing detail allows support beams to be hidden without the extra cost of installing joist hangers. Our Intertek Listed one hour, single-layer drywall fire rating simplifies compliance with building codes. MiTek's locally manufactured floor system makes good use of the environmental advantages of wood by using this renewable resource to fight climate change by reducing greenhouse gases.



MiTek®

FLOOR-TRUSS SYSTEM

ADVANTAGES

LIGHTWEIGHT

Mainly produced with 2x3 or 2x4 chords, in combination with our connector plates, it results in a light and reliable engineered wood floor system.



PRECISELY ENGINEERED

MiTek's open web FLOOR-TRUSS system is designed and manufactured to precise engineering specifications. Since it is custom-built for your project, there is no need to cut the structural elements onsite. Ingenious assembly details minimize the usage of other costly materials. Floor-Truss is designed and produced to your specific needs and delivers reliable performance.



OPEN WEB DESIGN

Its open web design eliminates the need for cutting and drilling; plumbing, electrical and ventilation services are quickly installed, saving time and money. Main ventilation distribution duct work can also be easily concealed in the floor thickness. This feature eliminates the concern of modifying structural elements and/or the time and materials of costly repair details.



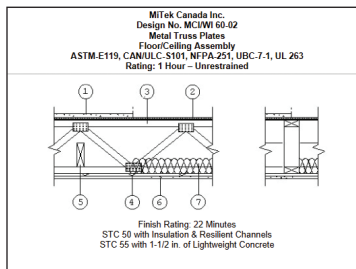
STRONGBACK BRIDGING

FLOOR-TRUSS's open concept allows the installation of strongback bridging, which actively contributes to reduce floor vibration. The addition of this important structural component allows the individual joist to work together as a "floor system." The quantity, size, location and nailing details will be indicated on the provided shop drawings and layout.



FIRE RATINGS

MiTek's FLOOR-TRUSS system has different fire-rated assemblies to suite your project needs and building codes compliance. Intertek Listed fire-rated assemblies meet CAN/ULC-S101 and ASTM-E119 standards (1 hour / single-layer drywall). If you need a 45 minutes or 60 minutes fire protection, we have a list of certified assemblies that will meet/exceed your project needs and/or building code requirements.



LONGER CLEAR SPANS

With longer clear spans than conventional lumber, architects and engineers can now enjoy clear span flexibility and building design freedom. MiTek's open web FLOOR-TRUSS system design flexibility allows a multitude of prefabricated details that substantially speed up installation onsite.

TOP CHORD BEARING

Probably one of the most appreciated features of the MiTek open web FLOOR-TRUSS system is the ability to hide beams in the floor by using a top chord bearing condition. No joist hangers are necessary and substantial material and labour savings can be achieved.

WIDE NAILING SURFACE

MiTek open web FLOOR-TRUSS system's wide nailing surface speeds up installation of the structural elements and floor sheathing. The wide flange width (2.5" or 3.5") ensures a large surface to apply the subfloor adhesive and contributes to a better subfloor sheathing support.

TRIMMABLE ENDS ENSURE A PERFECT FIT

Ultimate in design flexibility: using the same engineering support that has become the standard in the structural component industry, our onsite trimmable detail eliminates headaches due to bearing location discrepancies or design changes. Since MiTek FLOOR-TRUSS system allows precise customer design and trimmable conditions, you know that you can count on a highly polyvalent and effective floor system.

SOUND RATINGS

MiTek open web FLOOR-TRUSS system also has different certified assemblies for different sound transmission requirements. Please refer to the available Intertek certified assemblies for details or contact us and we will gladly help you. MiTek's open web FLOOR-TRUSS system has all the necessary code approvals to suit your needs.

MiTek®

© 2018 MiTek Canada, Inc. All Rights reserved 1046 - OCT 18

For more
information
contact your
MiTek authorized
floor system supplier

www.maritimetrussltd.ca

**Maritime
TRUSS**